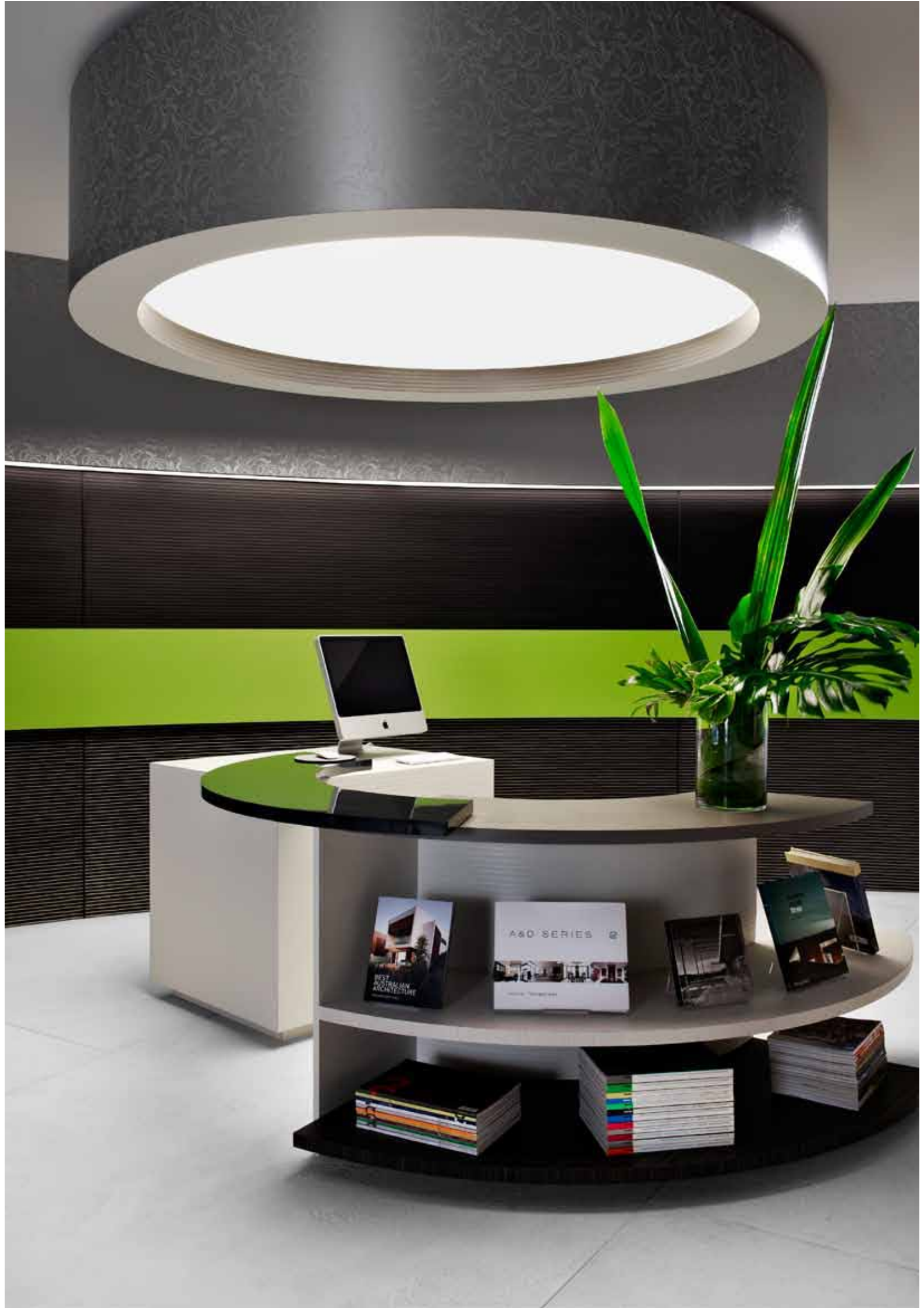


# LAMINEX® INNOVATIONS®



Laminex®  
Inspire your space





**Laminex® Innovations®** inspire your imagination. A stylish range of decorative laminates and unique surface materials, they turn even the simplest of ideas into the most extraordinary spaces. There's a colour, texture and pattern for almost any vertical application. You can select from over 65 contemporary decors, including metallic foils, silky satins, abstract designs and brushed finishes. Plus, easily match and integrate your choice with our complete Laminex Colour Palette. With minimal effort, Innovations can bring to life shop fittings, boutique accommodation, residential environments and office interiors. So when you want to create a look and feel that's truly inspirational, let your ideas run free with Laminex Innovations.

## 65 DECORATIVE SURFACES ■ TEXTURES ■ METALLICS ■ BRUSHED FINISHES ■ ABSTRACT DESIGNS



Cover, far right and above: Feature wall in Laminex Innovations **Tracery**, **Black Riser**, **Juicy Magic** and **Tribal Graphic**. Reception desk in Laminex Innovations **Ash White Rhythm** and Laminex **DiamondGloss Charcoal**. Shelves in Laminex **Ash White**, **Moose**, **Alaskan** and **Blackened Linewood**. Computer kiosk in Laminex Innovations **Black Riser** and Laminex **Multipurpose Compact Laminate Alaskan**. Shelves and drawers in Laminex Innovations **Black Riser** and Laminex **Multipurpose Compact Laminate Polar White**. Light feature in Laminex Innovations **Tracery** and **Black Riser**. Tom Stool designed exclusively for Schiavello by Korban + Flaubert.

\*Please obtain a copy of the Laminex Innovations 7 year limited warranty from The Laminex Group or visit [laminex.com.au](http://laminex.com.au).

# COLOUR RANGE



Polar White Strike  
**NEW**



Black Strike  
**NEW**



Carbon Crush



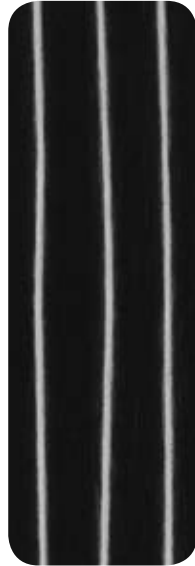
Brushed Platinum



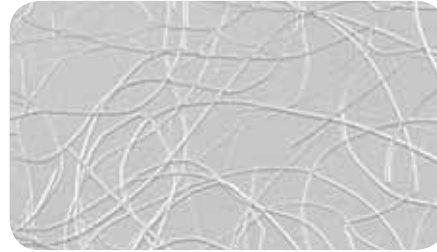
Electro Silver



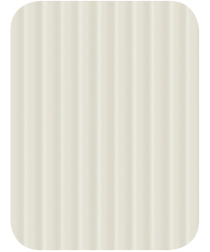
Ash White Rhythm#  
**NEW**



Tribal Graphic#  
**NEW**



Entanglement



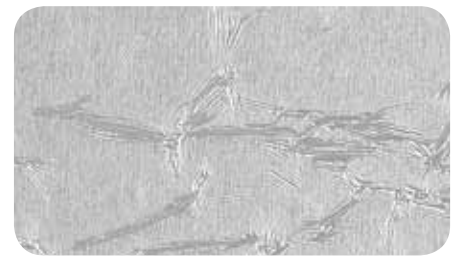
Sarsen Grey Corrugate



Ash White Rindle  
**NEW**



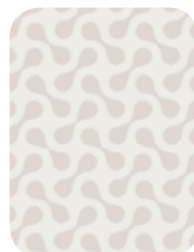
Snow Crush



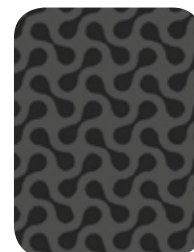
Creased Aluminium



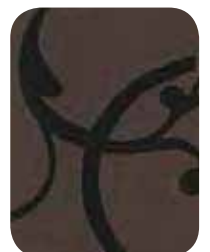
Ebony Flourish  
**NEW**



Pure Clone  
**NEW**



Bold Clone  
**NEW**



Ornamental Espresso#



Stellar Rindle  
**NEW**



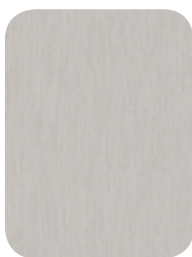
Fossil Rhythm#  
**NEW**



Black Riser#  
**NEW**



Silver Lustre



Brushed Stainless Steel



Brushed Graphite



Graphite Crossroads



Black Magic



Dusk Flourish  
**NEW**



Luscious Illumina



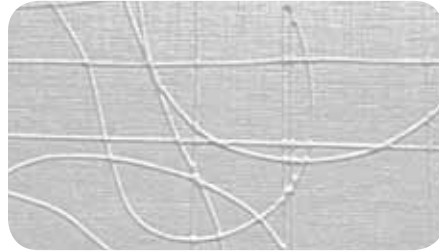
Artisan



Juicy Strike  
**NEW**



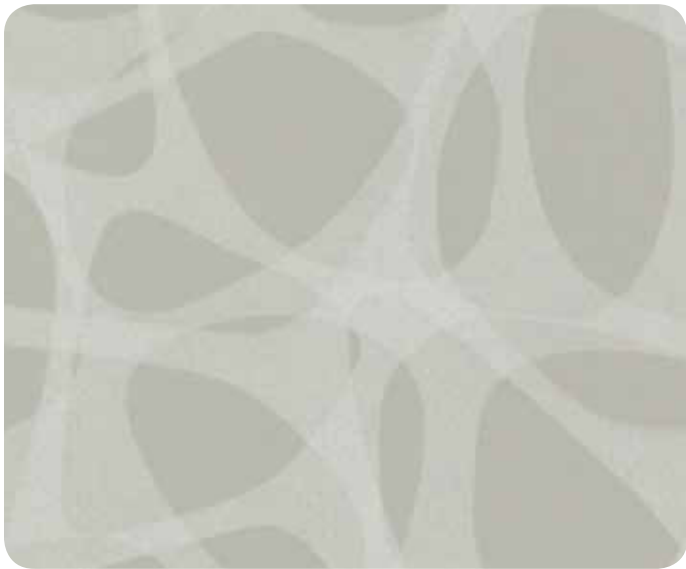
Juicy Magic  
**NEW**



Intrigue



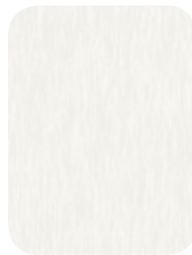
Filament  
**NEW**



Invoke  
**NEW**



Chichi Magic  
**NEW**



Polar White Magic  
**NEW**



Gossamer  
**NEW**



Anodised



Discovery



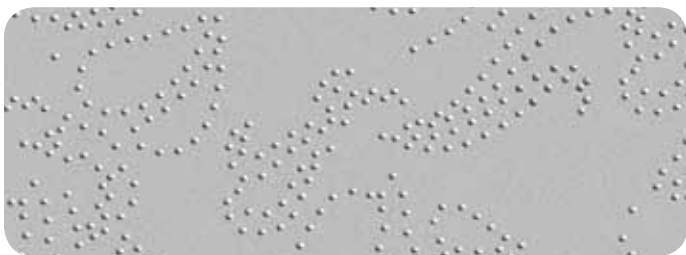
Trans Rondo



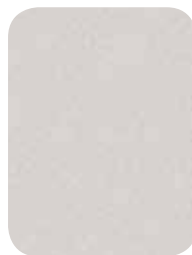
Goddess Illumina



Flute Silver



Tracery#



Zinc Lustre



Alumina Metaltex



Aluminium Forte



Quicksilver Lustre



Stellar Illumina



Satin Platinum



Electro Pearl



Electro Limegold



Electro Gold



Platinum Lustre



Fossil Strike  
**NEW**



Copper Crossroads



Electro Graphite



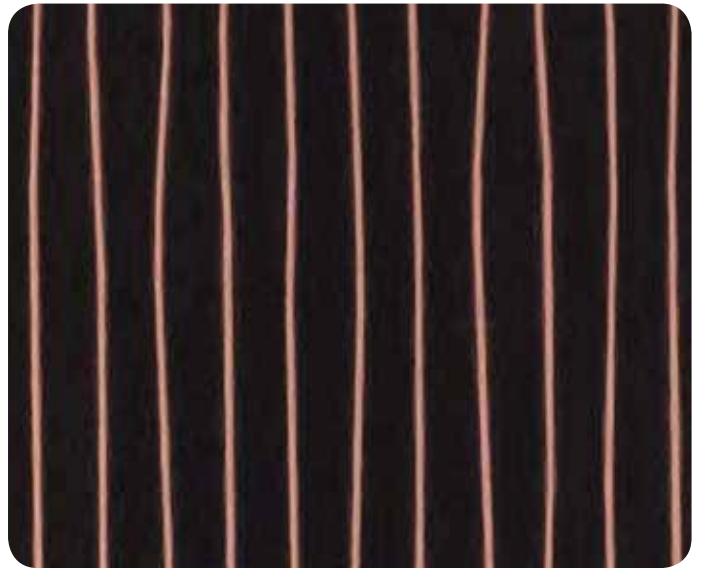
Electro Copper



Copper Lustre



Brushed Bronze



Tribal Flame#  
**NEW**



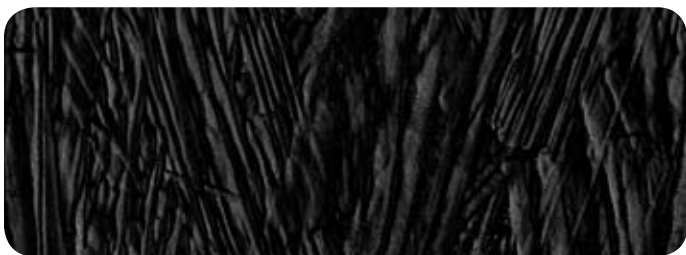
Crafted Copper



Ragged Copper



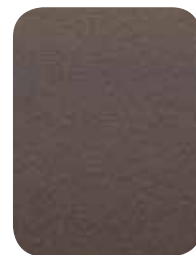
Brushed Titanium



Artisan Nero



Stellar Rhythm#  
**NEW**



Satin Smoke



Mirror Smoke

## INNOVATIONS METALLICS

Made with real metallic foils coated with a protective lacquer, Laminex Metallic Laminates offer a distinctive and decorative metallic look. The 'Metallics' range of laminates is covered by the relevant 'Metallics' technical data information as detailed at laminex.com.au

- Metallic laminates, with the exception of Brushed Stainless Steel, are intended for vertical applications only and can be damaged by heat or steam, hard objects, abrasive substances and solvents. Care should be taken with handling and fabrication as damage to the protective surface lacquer will lead to corrosion of the metal. Avoid metal to metal contact such as when using fittings, use a mastic or a gasket to prevent metal to metal corrosion. Brushed Stainless Steel is a postformable metallic laminate with a stainless steel surface. It has similar surface properties to solid stainless steel. Although it will scuff or scratch, it has extremely high wear resistance and is highly resistant to staining and chemical attack, making it ideal for laboratories, schools and hospitals where a durable and hygienic surface is required. Direct contact with high temperatures above 60°C should be avoided. Do not use Metallics laminates in high humidity environments as corrosion of the metal foil may occur.
- Brushed Stainless Steel metallic should only be postformed on a 'Brandt' type machine.
- Attention: All edges of the Brushed Stainless Steel laminate must be deflashed prior to installation to avoid injuries and delamination of the stainless steel foil by surface traffic. We recommend deflashing all edges by use of a grinding pad such as 3M Diapad™, a file or abrasive paper. Note that special fabrication requirements apply to Brushed Stainless Steel laminate. Contact our Customer Service Centre on 132 136 for detailed information.

## INNOVATIONS METAL-INSPIRED DESIGNS

Utilising the dynamic sheen of the look of metal and created to have the appeal of metal surfaces, this range includes the Illumina, Lustre and Electro laminates, which represent the sublime union of design and technology.

- Illumina designs utilise technology that creates exciting colour shifts and distortion in various lighting conditions and viewing angles. The degree of colour shift will vary with the level of gloss or sheen finish (i.e. Gloss finish will provide greater degree of shift than Natural finish). Gloss finish has low resistance to scratching. Adjacent panels should be aligned in the same length, width and up-down orientation to avoid unwanted colour differences.
- Innovations Lustre and Illumina laminates are supplied only as vertical postforming grade. Postforming conditions are covered by Laminex Redback technical data detailed at laminex.com.au
- Electro Series laminates are non-postforming, horizontal grade suitable for kitchen benchtops and other moderate wear areas. Electro Series laminates conform to AS/NZS 2924 HGS grade.

## INNOVATIONS TEXTURED LAMINATES

This range of Innovations laminates creatively combine surface textures with colour. The Rhythm, Rindle, Magic, Strike, Crush and Artisan collections of embossed laminates showcase a variety of colours in exciting new dimensions. These laminates are also recommended for vertical use only and are non-postformable.

AVAILABILITY							
Colour Name	New	Code	Laminate		Vertical Post-forming Option	Applications	
			Finish(es)	Size		Vertical Use	Horizontal Use
Alumina Metalltex		967	Metallic	2400x1200		✓	
Aluminium Forte <sup>4</sup>		242	Metallic	2400x1200		✓	
Anodised		964	Metallic	2400x1200		✓	
Artisan <sup>1</sup>		535	Embossed	2400x1200		✓	
Artisan Nero <sup>1</sup>		615	Embossed	2400x1200		✓	
Ash White Rhythm <sup>1</sup>	✓	100	Embossed	2400x1200		✓	
Ash White Rindle <sup>1</sup>	✓	101	Embossed	2400x1200		✓	
Black Magic <sup>1</sup>		566	Embossed	2400x1200		✓	
Black Riser <sup>1</sup>	✓	102	Embossed	2400x1200		✓	
Black Strike <sup>1,6</sup>	✓	103	Embossed	2400x1200		✓	
Bold Clone <sup>1,5</sup>	✓	104	Natural/Gloss	3600x1200	✓	✓	
Brushed Bronze		508	Metallic	2400x1200		✓	
Brushed Graphite		509	Metallic	2400x1200		✓	
Brushed Platinum		510	Metallic	2400x1200		✓	
Brushed Stainless Steel		957	Metallic	2400x1200		✓	✓
Brushed Titanium		999	Metallic	2400x1200		✓	
Carbon Crush <sup>1</sup>		234	Embossed	3000x1200		✓	
Chichi Magic <sup>1</sup>	✓	105	Embossed	2400x1200		✓	
Copper Crossroads		511	Metallic	2400x1200		✓	
Copper Lustre <sup>1,5</sup>		540	Natural	3600x1200	✓	✓	
Crafted Copper		240	Metallic	2400x1200		✓	
Creased Aluminium		512	Metallic	2400x1200		✓	
Discovery <sup>1,5</sup>		513	Natural/Gloss	3600x1200	✓	✓	
Dusk Flourish <sup>1,5</sup>	✓	106	Natural/Gloss	3600x1200	✓	✓	
Ebony Flourish <sup>1,5</sup>	✓	107	Natural/Gloss	3600x1200	✓	✓	
Electro Copper <sup>3</sup>		260	Standard	3600x1500		✓	✓
Electro Gold <sup>3</sup>		261	Standard	3600x1500		✓	✓
Electro Graphite <sup>3</sup>		262	Standard	3600x1500		✓	✓
Electro Limegold <sup>3</sup>		263	Standard	3600x1500		✓	✓
Electro Pearl <sup>3</sup>		264	Standard	3600x1500		✓	✓
Electro Silver <sup>3</sup>		265	Standard	3600x1500		✓	✓
Entanglement		617	Metallic	2400x1200		✓	
Filament <sup>1,5</sup>	✓	011	Natural/Gloss	3600x1200	✓	✓	

Colour Name	New	Code	Laminate		Vertical Post-forming Option	Applications	
			Finish(es)	Size		Vertical Use	Horizontal Use
Flute Silver <sup>2</sup>		917	Metallic	2400x1200			✓
Fossil Rhythm <sup>1</sup>	✓	109	Embossed	2400x1200			✓
Fossil Strike <sup>1,6</sup>	✓	110	Embossed	2400x1200			✓
Goddess Illumina <sup>1,5</sup>		515	Natural/Gloss	3600x1200	✓		✓
Gossamer <sup>1,5</sup>	✓	112	Natural/Gloss	3600x1200	✓		✓
Graphite Crossroads		516	Metallic	2400x1200			✓
Intrigue		618	Metallic	2400x1200			✓
Invoke <sup>1</sup>	✓	113	Natural/Gloss	3600x1200			✓
Juicy Magic <sup>1</sup>	✓	024	Embossed	2400x1200			✓
Juicy Strike <sup>1,6</sup>	✓	114	Embossed	2400x1200			✓
Luscious Illumina <sup>1,5</sup>		518	Natural/Gloss	3600x1200	✓		✓
Mirror Smoke		241	Metallic	2400x1200			✓
Ornamental Espresso <sup>1,5</sup>		248	Gloss	3600x1200	✓		✓
Platinum Lustre <sup>1,5</sup>		541	Natural	3600x1200	✓		✓
Polar White Magic <sup>1</sup>	✓	115	Embossed	2400x1200			✓
Polar White Strike <sup>1,6</sup>	✓	116	Embossed	2400x1200			✓
Pure Clone <sup>1,5</sup>	✓	117	Natural/Gloss	3600x1200	✓		✓
Quicksilver Lustre <sup>1,5</sup>		519	Natural	3600x1200	✓		✓
Ragged Copper		952	Metallic	2400x1200			✓
Sarsen Grey Corrugate <sup>1</sup>		981	Corrugate	2400x1200			✓
Satin Platinum		619	Metallic	2400x1200			✓
Satin Smoke		249	Metallic	3000x1200			✓
Silver Lustre <sup>1,5</sup>		858	Natural	3600x1200	✓		✓
Snow Crush <sup>1</sup>		236	Embossed	3000x1200			✓
Stellar Illumina <sup>1,5</sup>		958	Natural/Gloss	3600x1200	✓		✓
Stellar Rhythm <sup>1</sup>	✓	118	Embossed	2400x1200			✓
Stellar Rindle <sup>1</sup>	✓	119	Embossed	2400x1200			✓
Tracery		598	Metallic	2400x1200			✓
Trans Rondo		593	Metallic	2400x1200			✓
Tribal Flame	✓	120	Metallic	2400x1200			✓
Tribal Graphic	✓	121	Metallic	2400x1200			✓
Zinc Lustre <sup>1,5</sup>		749	Natural	3600x1200	✓		✓

All Innovations laminates are for vertical use only, with the exception of Brushed Stainless Steel and Electro Series. Innovations designs have been manufactured for optimum decorative effect and have minimal surface protection. The majority of the vertical grades of Innovations laminates have low resistance to wear, scratch and impact. The non-metallic laminates have a medium resistance to impact. Appropriate care must be exercised in the application and use of these products. The Laminex Innovations range consists of several laminate types and where applicable conforms to the requirements of Australian/New Zealand Standard 2924. Most Innovations options are available from our manufacturing plant with a lead-time of 7 working days. 1. Refer to laminex.com.au for the technical data sheet on vertical grade laminates. 2. Flute Silver has a specific grain direction as indicated by arrows printed on the protective film. When fabricating, adjacent panels must be aligned so that the arrows run in the same direction. 3. Electro Series laminates are non-postforming, horizontal grade suitable for kitchen benchtops and other moderate wear areas. 4. Aluminium Forte has superior scratch resistance to other Metallic laminates but is still recommended for vertical use only. 5. Refer to postforming conditions as covered by Laminex Redback technical data. 6. Embossed linear finishes such as Strike cannot be guaranteed perfectly parallel with the long edge of the laminate and machining may be required to realign.



**Laminex**<sup>®</sup>  
Inspire your space

For a free sample chip call 1800 002 204. For more information visit [laminex.com.au](http://laminex.com.au) or call 132 136.

Laminex Innovations is marketed and distributed by The Laminex Group, a division of Laminex Group Pty Limited ABN 98 004 093 092. The colours of the products featured within the imagery in this brochure are as close to the Laminex Innovations range as photographic lighting and modern printing processes allow. Laminex Innovations is no different than any other material in that darker colours will always show scratches and superficial wear and tear more readily than lighter colours. Laminex Innovations should be protected from strong, direct sunlight as continuous exposure may cause discolouration or fading to the surface. Please obtain a copy of the terms and conditions of the Laminex Innovations 7 year limited warranty from The Laminex Group or visit [laminex.com.au](http://laminex.com.au). This warranty is in addition to any rights that may exist under the Trade Practices Act, Laminex<sup>®</sup>, Innovations<sup>®</sup>