

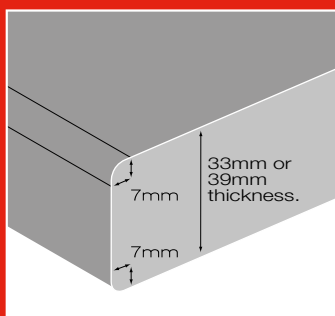


TIGHTFORM® LAMINATES

FORMICA® TIGHTFORM® LAMINATES offer the best of both worlds. Not only do they boast the hardwearing performance of a laminate, their ability to form to a tighter radius provides a modern square edge look. Available in 97 colour options including woodgrains and patterns, Formica Tightform Laminates complement the entire Formica Panel range which makes them ideal for kitchens, bathrooms, laundries and commercial areas. Backed by a 7 year limited warranty, for a creative edge that demands superior performance, enjoy the possibilities with Formica Tightform Laminates.



7mm PROFILE



Formica Tightform Laminates are guaranteed to form to a radius of 7mm, giving you a seamless square edge and fresh, modern look.



COLOURS



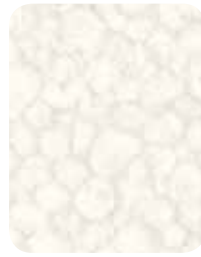
Pure Marble



Cocoa Sand



Ice Crush



Artemis Stone



Bliss Shitake



Silver Strata



Sail White Oxide



Alpine Marble



Mineral Spa



Rock Salt



Orion



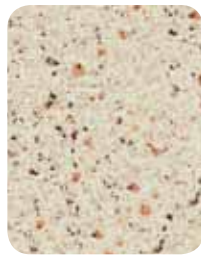
Umbrian Granite



Argile



Light Travertine



Yellow Pepper



Escarpment



Touchstone



Amaretto Stone



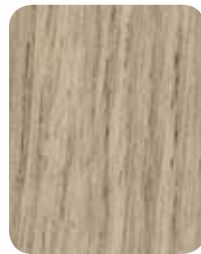
Nordic Birch



Natural Oak



Refined Oak



Idyllic



Radiant Maple



Lemon Tree



Fini Blonde



Barcelona Cherry



Metro Wood



Urban Wood



Vicenza Walnut



Fini Chocolate



Snow Elm



Slalom



Hotham Oak



Habitat



Smoke Melange



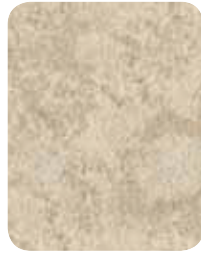
Charred Oak



Portico Marble



Beach Stone



Sand Cloud



Papiro Chalk



Valencia Marble



Concrete Stone



Antique White Dust



French Sandstone



Provenance



Macchiato Granite



Aurum



Forest Floor



Sand Crystal



Tuscan Marble



Castille Granite



Peach Granite



Pixel Tabac



Earth Wash



Soft Maple



Manitoba Figured



Tasmanian Ash



Golden Beech



Planked Apple



Oriental Block
(Linea)



Euro Beech



Cherry



Planked Pear



Classic Cherry



Khaya Mahogany



Varona



Chocolate Pear



Straight Grain Wenge



Fini Wenge



Prestige Walnut



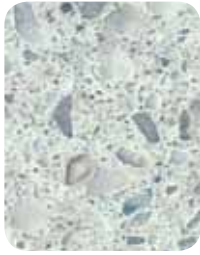
Jarrah



South West Jarrah



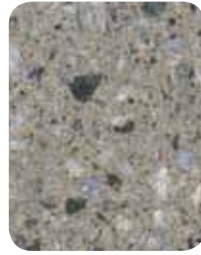
Tuscan Granite



Arctic Stone



Frost Quartzite



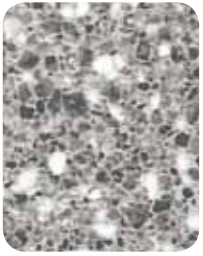
Smoke Quartzite



Autumn Stone



Pietro Nero



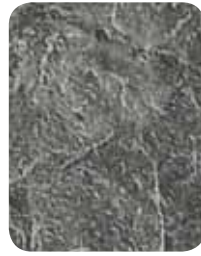
Flint Crystal



Water Stone



Cast Concrete



Lava Stone



Carbon Moss



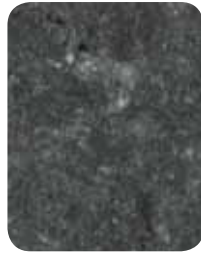
Heavenly



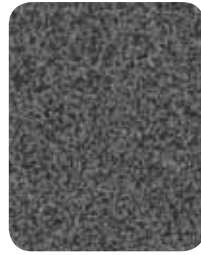
Blue Quartz



Flinders Blue



Meteorite



Ironstone



Blackstone



Flinders Black



Brushed Silver



Ribbon Ash



Bliss Cinder



Ribbon Aniseed



Papiro Storm



Ebony Oxide



Limed Ash



INFORMATION Visit formica.com.au for colour and design tips, technical information, care, maintenance and more.

ENQUIRIES Call 132 136.

SAMPLES Call 1800 002 204.

WARRANTY 7 year limited warranty. Visit formica.com.au to find out more.

Formica stockist

formica.com.au

Formica Tightform Laminates are marketed and distributed by The Laminex Group, a division of Laminex Group Pty Limited ABN 98 004 093 092. The colours of the products featured within the imagery in this brochure are as close to the Formica Tightform Laminates range as photographic lighting and modern printing processes allow. The Formica Tightform Laminates range is no different than any other material in that darker colours and gloss finishes will always show scratches and superficial wear and tear more readily than lighter colours and lower-gloss surfaces. Formica Tightform Laminates should be protected from strong, direct sunlight as continuous exposure may cause discolouration or fading to the surface. Colours/finishes shown are available at the time of publication, but may be withdrawn without notice. Please obtain a copy of the terms and conditions of the Formica Tightform Laminates 7 year limited warranty from The Laminex Group or visit formica.com.au. This warranty is in addition to any rights that may exist under the Trade Practices Act (Cth). **Formica[®] Tightform[®]**